

levels[®] | Business
Tower

levels[®] Business
Tower

The sky is yours.

إمْتَلِك السَّمَاءَ

Our Story

urbnlanes

DEVELOPMENTS

A real state developing company and a proud member of Emeel Abdalla Investments and therefore it is a company built on a wide array and several years of experiences.

Specialized in meeting expectations and executing projects that are both functional and aesthetic. Their core value is delivering projects with the highest quality in a timely manner that is always satisfactory and practical to the people using the spaces.

Mission:

Is to deliver a feeling through our buildings; a positive energy that makes a difference with people in the space they inhabit whether they are residential, commercial or office spaces.

Vision:

Is build on setting a new benchmark in the field of real estate development in Egypt. We aim to inspire the world through buildings that not only reflect technicality but also mirror and go back to our community.

Values:

We aim at contributing to community development by both directing the real estate development field towards a more quality over quantity mindset and creating spaces that help people in living better lives.

A MEMBER OF



More than 36 years of experience
100+ projects

20+
Towers on ground



YJM Medical center Tower | KUWAIT-2019



Panasonic Tower | KUWAIT-2019



Rashdan Tower | KUWAIT-2019



Levels Tower | KUWAIT-2021

Under Construction Projects,



Hessa Towers | KUWAIT - IN PROCESS



Misk Hotel | KUWAIT - IN PROCESS

Projects in Egypt



Sheraton Administrative Building-1 | 2016

urblanes
DEVELOPMENTS

A MEMBER OF



Sheraton Adminstrative Building-2 | CFC



Sheraton Adminstrative Building-3 | Ideal Standard



levels[®] Business Tower

The northern axis of Bin Zayed.
The first row of the Downtown towers.
The new administrative capital.

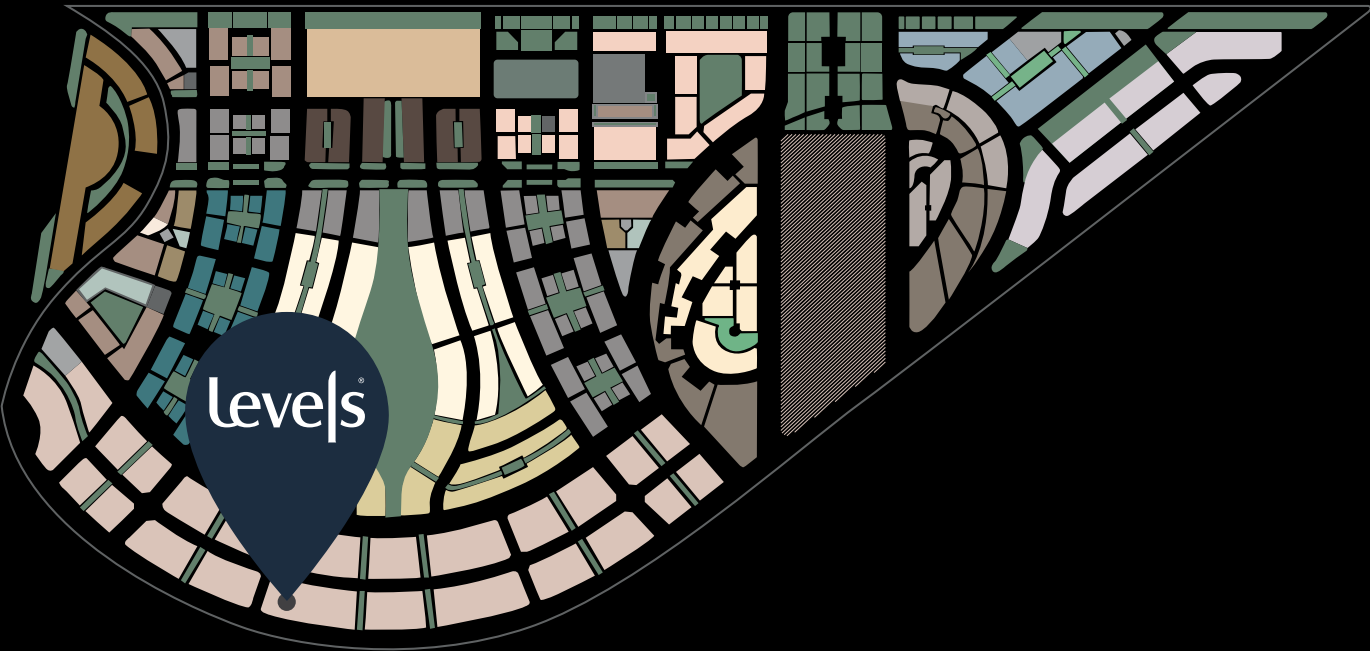
Neighborhood

The New Administrative Capital is set to become a new center of excellence for living in Egypt and beyond. It will feature a fully-integrated capital with world-class residential, commercial, medical, financial, and educational institutions. Moreover, an independent international airport, a modern train station that is connected to Egypt's railway system and it will use the most advanced technology to provide the first central security system. It is expected to attract 40 million people upon completion.

4 minutes away from the government district and Misr Mosque.
3 minutes away from Al Masa Hotel.

The only land in the tourist towers that has a pedestrian bridge passing by Green River to Down Town.

Levels is located at the first row of the Downtown towers, the new administrative capital, and on the northern axis of Bin Zayed and the Green River. with an open view of the Green River.



Architecture

Elite Luxurious Design

Urbnlanes takes pride in developing long-term plans and implementing strategies that will help achieving goals of our tenants. The tower is a representation for innovation, utilizing a luxurious life style and the latest trends of corporate spaces.

The design incorporates natural abstract elements into the heart and soul of the building as every few levels are Divided into themed, named zones. Starting with Levels Mall, the white edition interior design for the commercial area. Followed by Selene, the grey edition interior for office spaces. Then comes Sol with a black edition interior design for the admin spaces. Last but not least Arura, the colorful interior design for the sky lounge, admin offices and hotel apartments.



Mr. Mohamed Hafez
C.E.O. Hafez Consultant



Mr. Francesco Anzolin
Architect and CEO of WSA



Partners of success..

Our core value is our Legacy, success and commitment to deliver our projects with the highest quality in a timely manner, And to achieve this we chose our partners very well.



Mr. Walid Elsewedy
C.E.O. & Founder



Ms. Heba Kamal
General Manager



Mr. Mohamed Gouda
C.E.O. & Founder





Our story starts
with the core



Our story starts with the core. A core of art, culture, luxury, and wonder. That core expands and extends in both directions creating a tower of different Levels of experiences for all its tents. Every few levels contain a new experience that elevates both the work and pleasure sides

of life. Which creates endless opportunities for growth and expansion, as the sky will be yours.

Experience success in the business world with a set environment that was built and customized to obtain the ultimate potential of our people.

Arura
Northern Light
Sky Lounge
Admin Offices
& Hotel
Apartments
Floor 26 to 36

Sol
Sun in Latin
Admin Spaces
Floor 16 to 25

Selene
Moon in Greek
Office Spaces
Floor 3 to 16

Levels Mall
Commercial Area
Floor 1 to 3
5 floors Underground
parking & storage

The project consists of 36 floors.
5 floors underground for parking & storage.

The sky is yours.



Levels Mall

White edition interior

Commercial Area

Floor 1 to 3

5 floors Underground parking & storage



Selene

Moon in Greek

Grey edition interior

Office Spaces

Floor 3 to 16



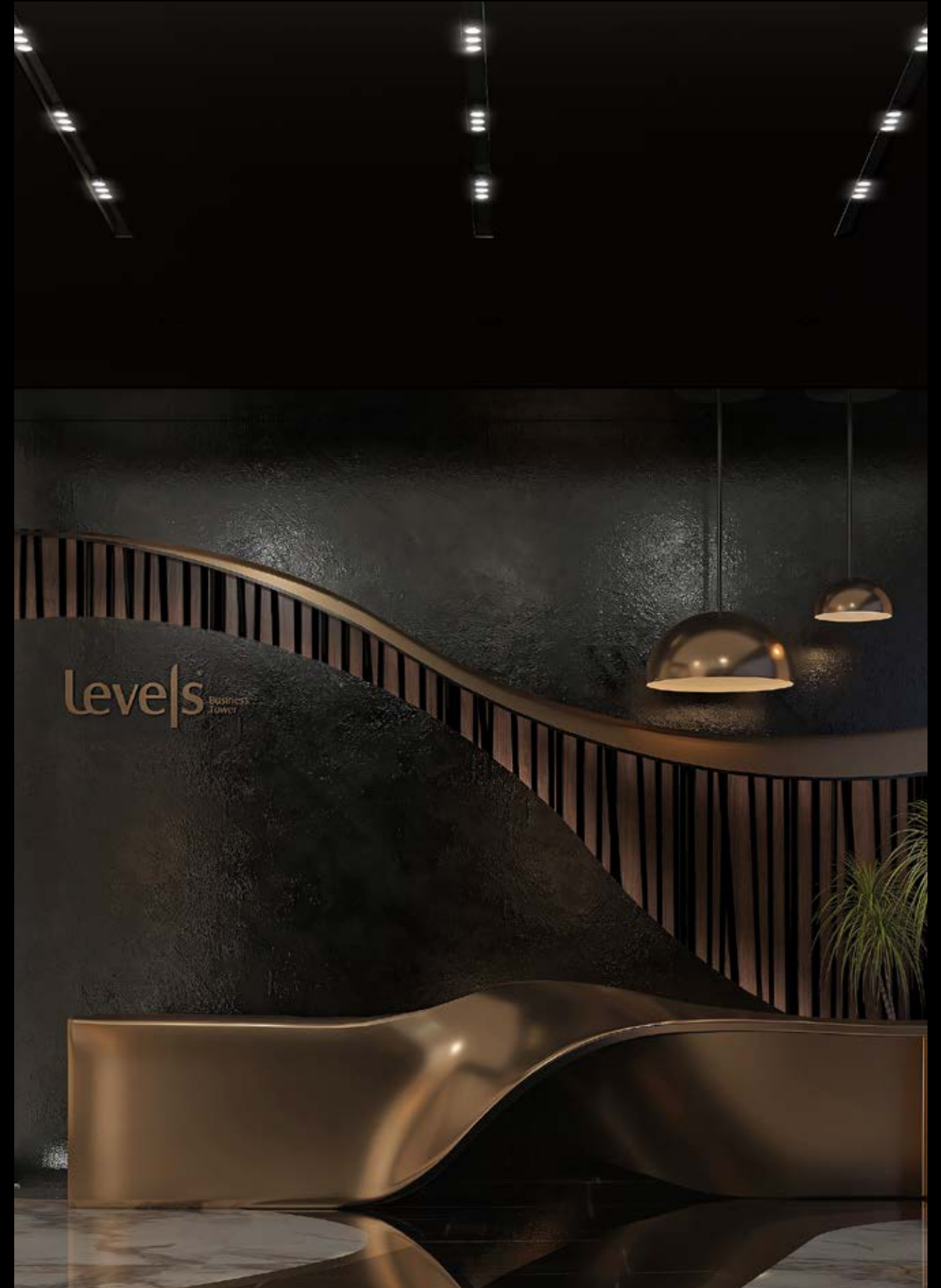
Sol

Sun in Latin

Black edition interior

Admin Spaces

Floor 16 to 25



Arura

Northern Light

Colorful edition interior

Sky Lounge
Admin Offices
& Hotel Apartments
Floor 26 to 36



A great hive for success.



Facilities & Services

Lay back
and recuperate.

The sky is yours.



Facilities & Services

VIP lounge

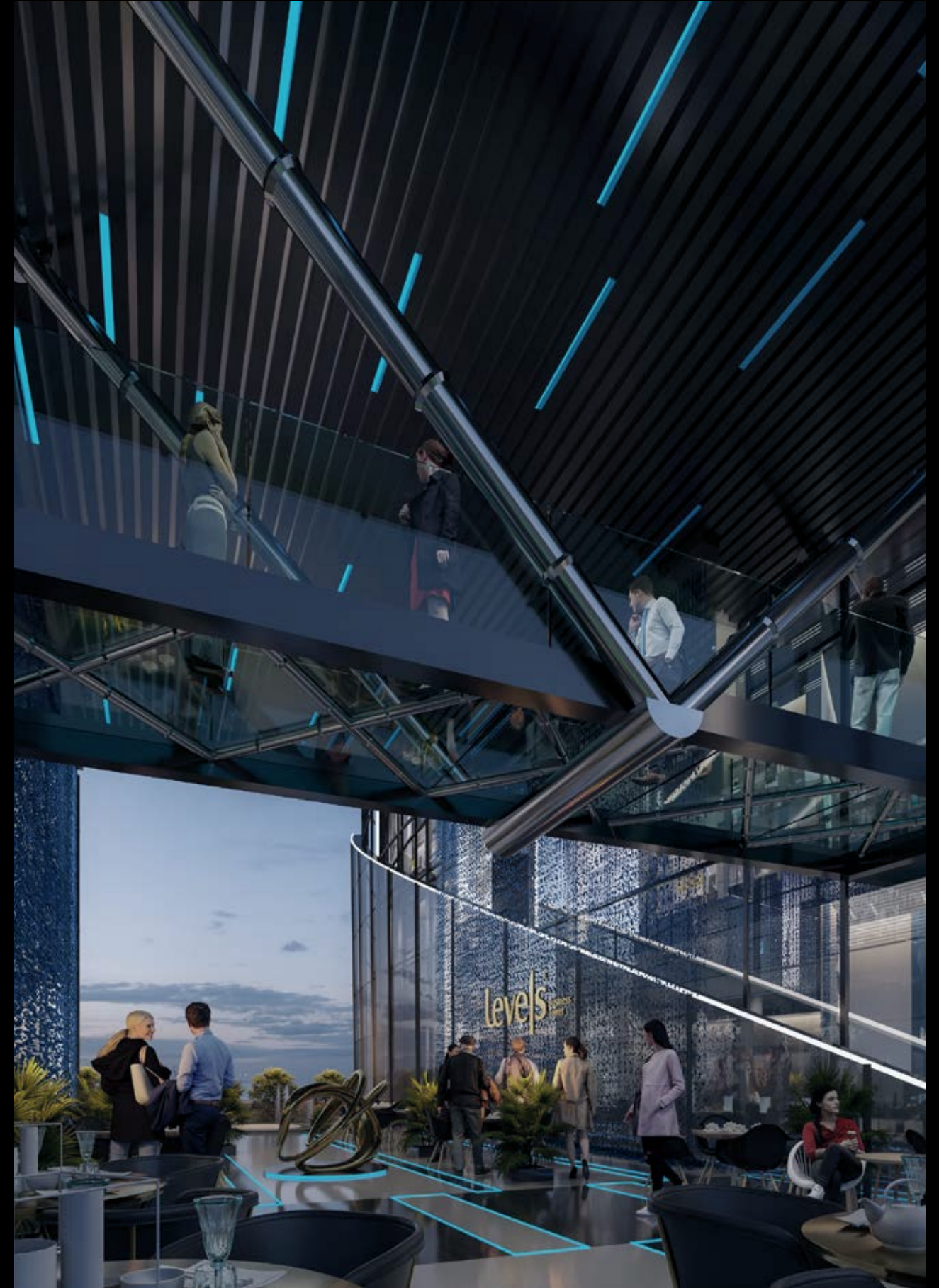
Cigar lounge

Espresso lounge

Meeting rooms



Tilted floor
Glass room
Glass bridge



Facilities & Services

Mall

Retail

E zone

Anchor stores

Food Court



Facilities & Services

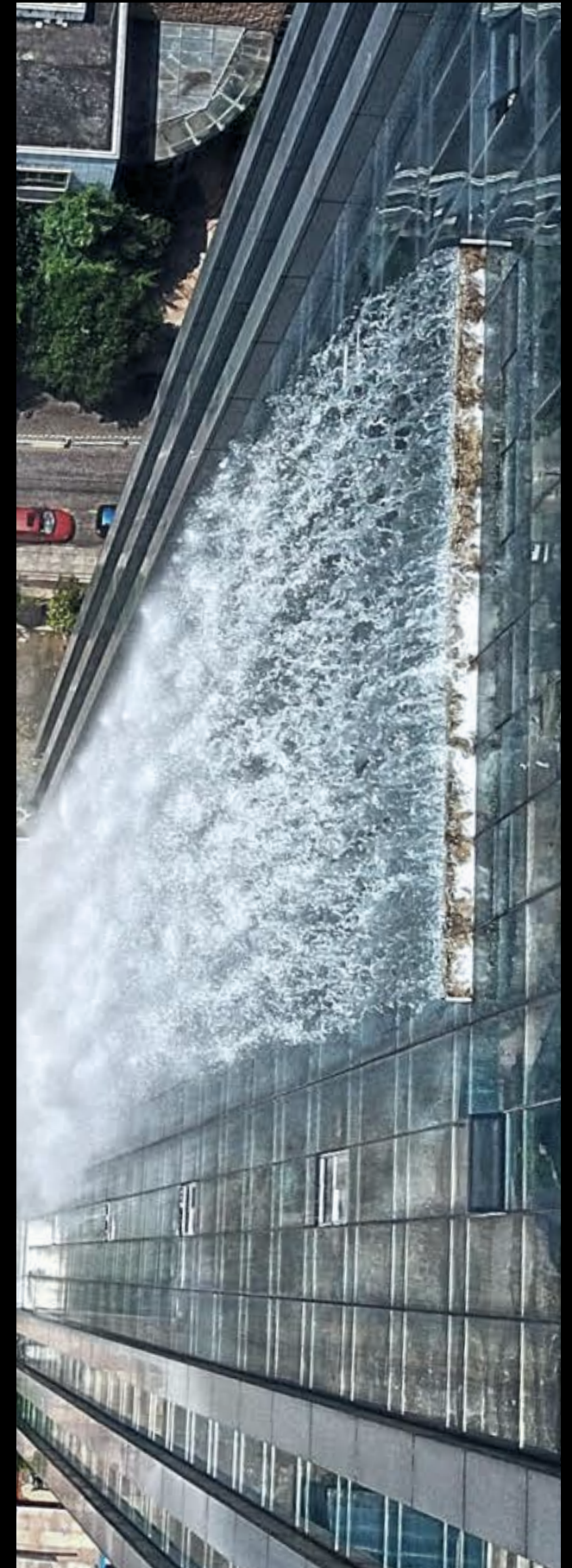
Spa

Fountain statue

infinity pool

Fountains

Hotel



Facilities & Services

Kids club
Running way
Bowling
Gym



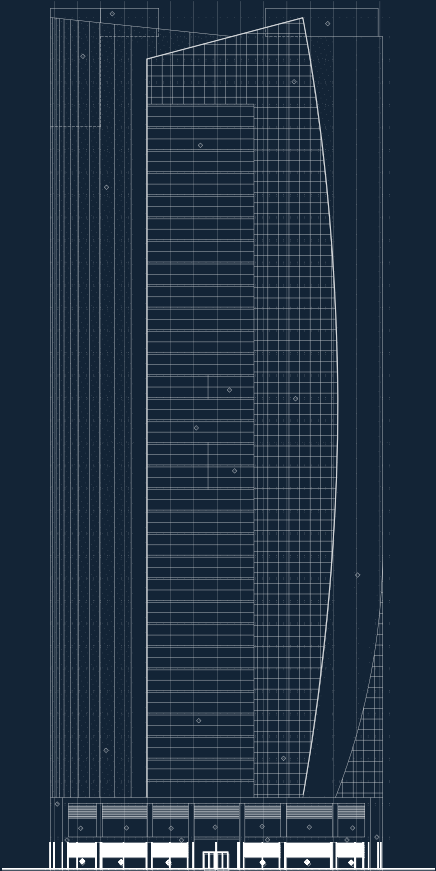
Floor Plans

Disclaimer: Drawings are not to scale and the dimensions are approximate, Urbnlanes reserves the right to change in the master plan, all drawing dimensions, Areas and Materials without notification.

-Any colored images shown are indicative only, actual colors may vary.
-Floor plans may be mirrored depending on location on master plan.
-In the case of garden leveloption, stair and terrace details may vary.



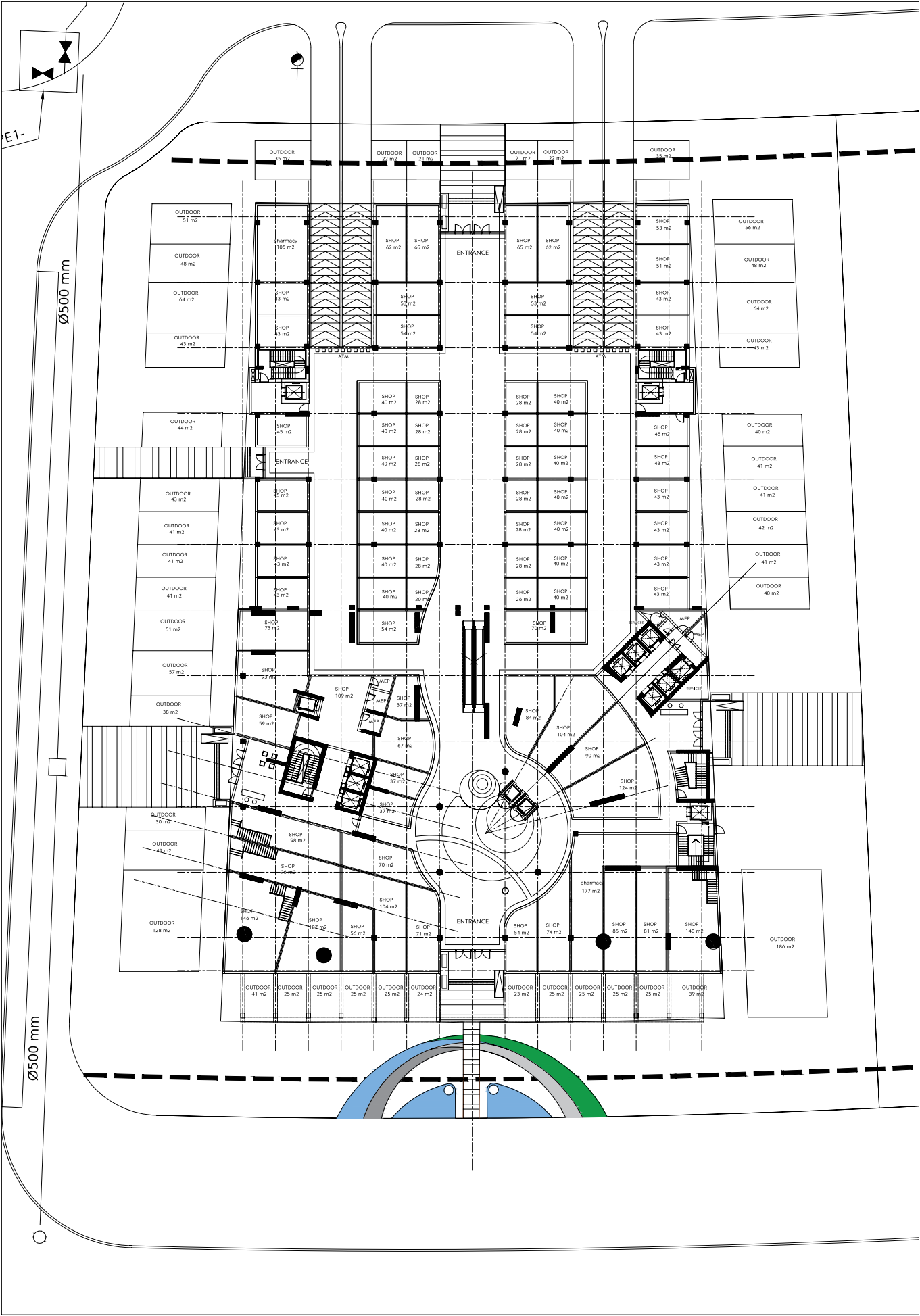
Ground Floor



Disclaimer: Drawings are not to scale and the dimensions are approximate, Urnlanes reserves the right to change in the master plan, all drawing dimensions, Areas and Materials without notification.

-Any colored images shown are indicative only, actual colors may vary.
-Floor plans may be mirrored depending on location on master plan.
-In the case of garden leveloption, stair and terrace details may vary.

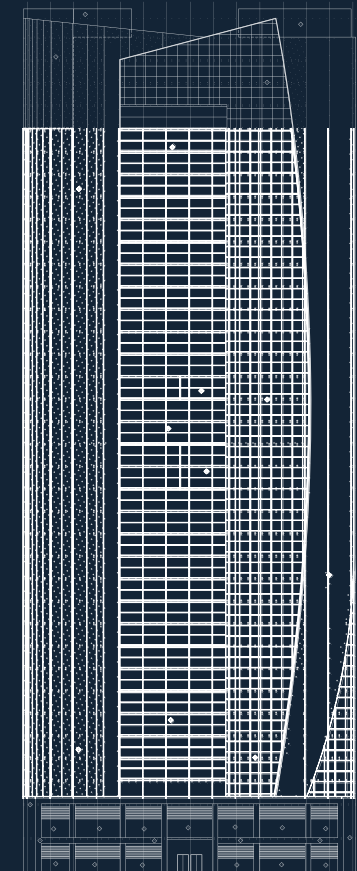
FLOOR PLAN



- Any colored images shown are indicative only, actual colors may vary.
- Floor plans may be mirrored depending on location on master plan.
- In the case of garden leveloption, stair and terrace details may vary.

[illegible]

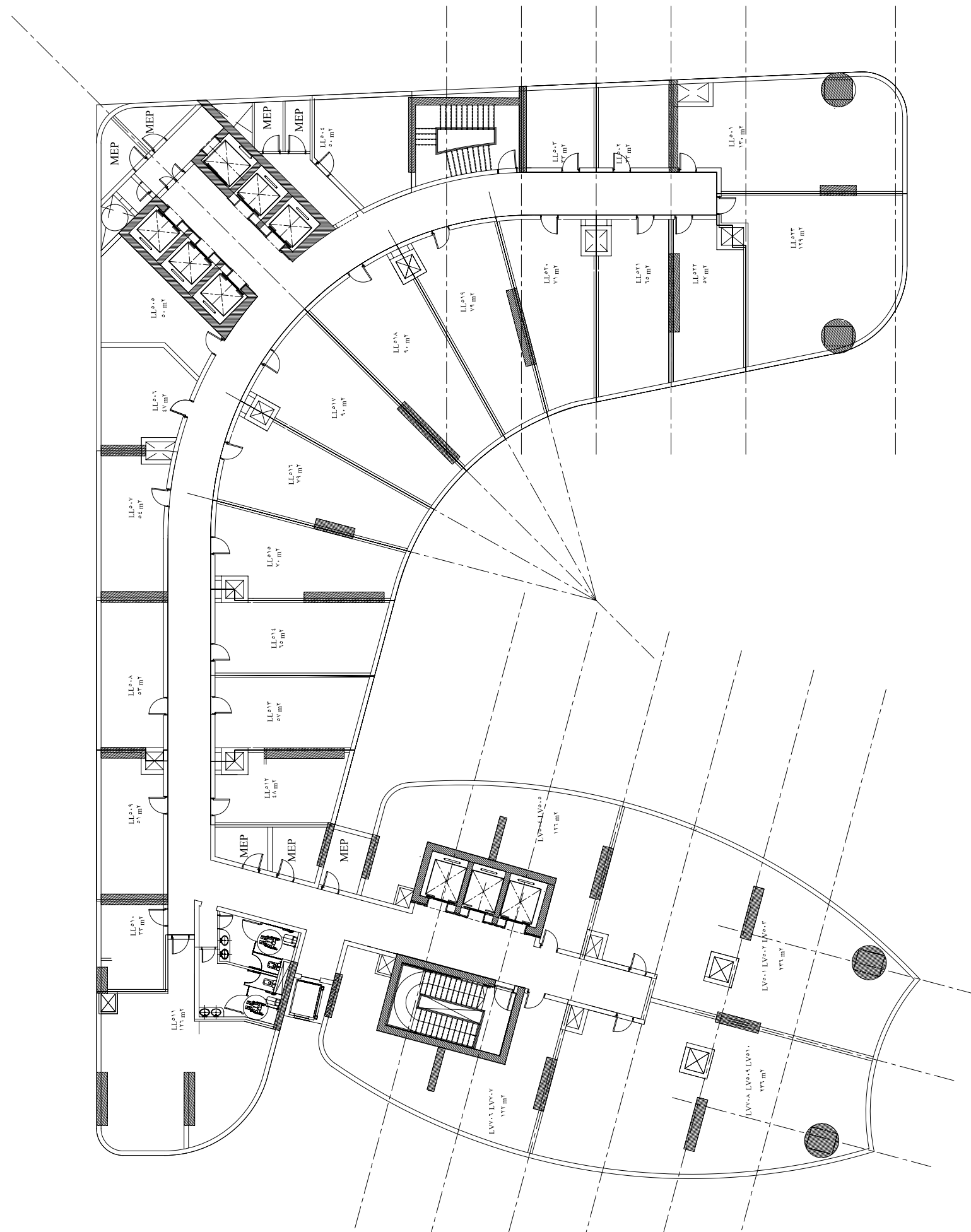
Typical Floors



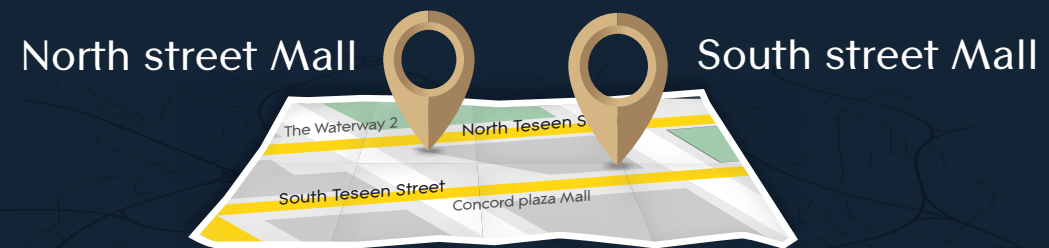
Disclaimer: Drawings are not to scale and the dimensions are approximate, Urbnlanes reserves the right to change in the master plan, all drawing dimensions, Areas and Materials without notification.

-Any colored images shown are indicative only, actual colors may vary.
-Floor plans may be mirrored depending on location on master plan.
-In the case of garden leveloption, stair and terrace details may vary.

FLOOR PLAN



New Projects Soon In New Cairo



S T A Y T U N E D . .

Launching in two of the most significant locations in New Cairo,
East and West sides of street 90.



urbnlanes

DEVELOPMENTS



A MEMBER OF



B1 Ground floor, Mivida
Business Park, Emaar,
New Cairo, Egypt.

urbnlanes-dev.com

